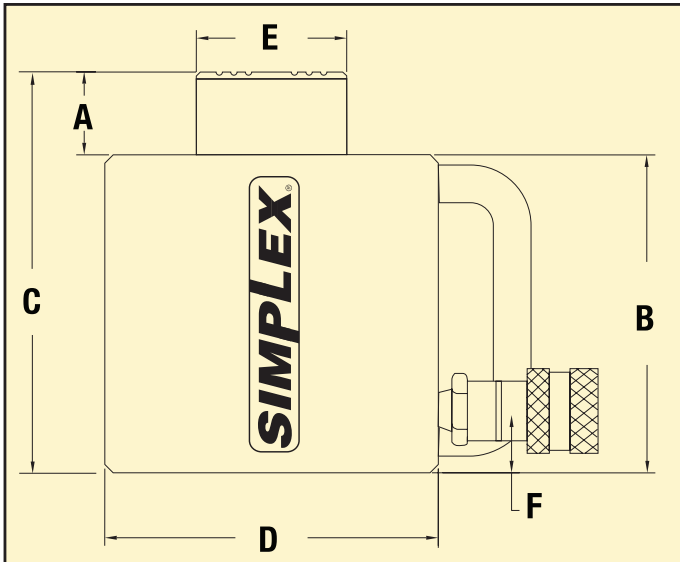


Hydraulic Cylinders | 10 – 100 Ton | RLS Series | Single Acting - Spring Return - Low Profile

Model RLS-201


Simplex RLS Series provides the ideal fit & force required for most bridge lifting and pier cap maintenance jobs. Compact, light weight & tough as nails, Simplex cylinders are at home on any construction site.



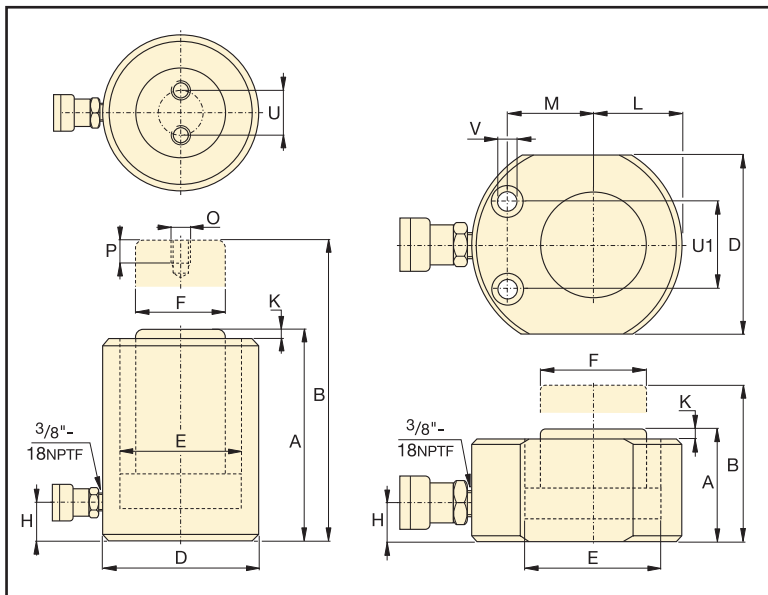
Specifications

Model	Capacity (tons)	A Stroke (in.)	B Min. Ht. (in.)	C Ext Ht. (in.)	Ram Bore Dia. (in.)	Effect Area (sq. in.)	Pres. @ cap. (psi)	Oil Cap. Req'd (cu.in.)	D Body O.D. (in.)	E Piston O.D. (in.)	F Base To Port C/L (in.)	Weight (lbs.)	Sugstd. Hand Pump	
RLS101	10	1 1/2	3 15/32	4 31/32	1 11/16	2.24	8,940	3.4	2 3/4	1 1/2	11/16	9	P42/P72	
RLS201	20	1 3/4	3 7/8	5 5/8	2 3/8	4.43	9,030	7.8	3 5/8	2		11		
RLS302	30	2 7/16	4 5/8	7 1/16	2 7/8	6.49	9,250	15.8	4	2 5/8		3/4		15
RLS502	50	2 3/8	4 13/16	7 3/16	3 1/2	9.62	10,400	22.8	4 7/8	2 3/4		5/16		24
RLS1002	100	2 1/4	5 9/16	7 13/16	5	19.63	10,200	44.2	6 1/2	3 5/8	1 1/4	50	P140	

Green shading reflects rental inventory.

Hydraulic Cylinders | 10 – 100 Ton | RSM & RCS Series | Single Acting - Spring Return - Low Profile

**Model
RSM1000**

RCS-Series
RSM-Series

**Model
RCS1002**


Specifications

Cylinder Cap. Tons (Max)	Stroke (in.)	Model	Cylinder Effective Area (in ²)	Oil Cap. (in ³)	A Collapsed Height (in.)	B Extended Height (in.)	D Outside Diameter (in.)	E Cylinder Bore Diameter (in.)	F Plunger Diameter (in.)	H Base to Advance Port (in.)	K Plunger Protrusion from Base (in.)	L Plunger to Base (in.)	M Plunger to Mtg. Hole (in.)	Weight (lbs.)
10 (11.2)	.44	RSM-100	2.24	.98	1.69	2.13	3.25 x 2.19	1.69	1.50	.75	.04	1.09	1.34	3.1
20 (22.1)	.44	RSM-200	4.43	1.94	2.03	2.47	4.00 x 3.00	2.38	2.00	.75	.04	1.56	1.56	6.8
30 (32.4)	.50	RSM-300	6.49	3.25	2.31	2.81	4.63 x 3.75	2.88	2.50	.75	.08	1.88	1.75	10
50 (48.1)	.63	RSM-500	9.62	6.01	2.63	3.25	5.50 x 4.50	3.50	2.75	.75	.08	2.25	2.13	15
75 (79.5)	.63	RSM-750	15.90	9.94	3.13	3.75	6.50 x 5.50	4.50	3.25	.75	.08	2.75	2.63	25
100 (98.1)	.63	RSM-1000	19.63	12.27	3.38	4.00	7.00 x 6.00	5.00	3.63	.75	.08	3.00	2.94	32
150 (153.4)	.63	RSM-1500	30.68	19.17	3.94	4.56	8.50 x 7.50	6.25	4.50	.94	.08	3.75	3.25	58
10 (11.2)	1.50	RCS-101	2.24	3.35	3.47	4.97	2.75	1.69	1.50	.69	.20	—	—	6
20 (22.1)	1.75	RCS-201	4.43	7.75	3.88	5.63	3.63	2.38	2.00	.69	.13	—	—	11
30 (32.4)	2.44	RCS-302	6.49	15.82	4.63	7.06	4.00	2.88	2.62	.75	.13	—	—	15
50 (48.1)	2.38	RCS-502	9.62	22.85	4.81	7.19	4.88	3.50	2.75	.94	.08	—	—	22
100 (98.1)	2.25	RCS-1002	19.63	44.18	5.56	7.81	6.50	5.00	3.63	1.25	.06	—	—	46

*RSM-50 is fitted with an AR-400 coupler.
Green shading reflects rental inventory.