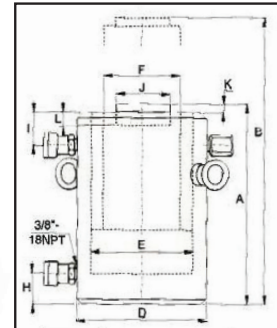
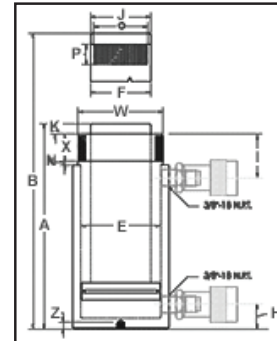


Hydraulic Cylinders | 300 Ton | RR Series | Double Acting

Model RR-3006


Specifications

Cylinder capacity (tons)	Stroke (in.)	Model	Cyl. effect Area (in.2)	Oil Capacity (in.3)	A Collap. Height (in.)	B Ext. Height (in.)	D Outside Diam (in.)	E Cyl. Bore Diam (in.)	F Plngr. Diam. (in.)	H Cyl. Base to Advance port (in.)	J Saddle Diam. (in.)	K Saddle Protrusion from plngr (in.)	O Plunger Internal Thread (in.)	P Plunger Thread Length (in.)	W Collar Thread (in.)	X Collar Thread Length (in.)	Top to Return Port (in.)	Weight (lbs.)
150	13.13	RR-15013	30.71	403.27	22.20	35.31	8.00	6.25	4.50	1.94	4.49	.75	3/8 - 16	1.38	8	2.36	3.31	275
300	6.00	RR-3006	70.93	425.56	19.13	25.13	12.25	9.50	6.50	3.50	6.50	1.13	2.5 - 12	3.25	12 1/4 - 12	2.31	4.50	441

Green shading reflects rental inventory.

Specifications

Cylinder Capacity (tons)	Stroke (in.)	Maximum Operating Pressure (psi)	Model Number	Maximum Cylinder Capacity (tons)		Cylinder Effective Area (in.)		Oil Capacity (in.)		Weight (lbs.)	A Collapse Height (in.)	B Extend Height (in.)	D Outside Dia. (in.)	E Cylinder Bore Dia. (in.)	F Plunger Dia. (in.)	H Base to Advance Port (in.)	I Top to Retract Port (in.)	J Standard Saddle Dia. (in.)	K Saddle Protr. from Plgr. (in.)	L Depth of Plunger Hole (in.)
				Push	Pull	Push	Pull	Push	Pull											
500	4.00	10,000	CLR-5004	500	193	113.5	38.60	445.5	152	791	15.75	19.75	15.75	12.01	9.76	3.15	6.61	7.05	.20	.98