

## Shackles | 0.5 - 85 Ton | Bolt Type

**Material:** bow and pin high tensile steel, Grade 6, quenched and tempered

**Finish:** hot dipped galvanized

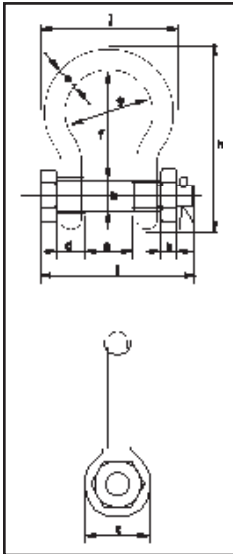
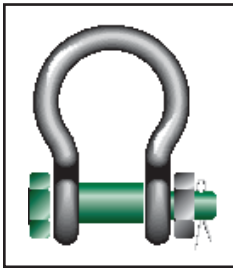
**Safety Factor:** MBL equals 6 x WLL

**Temperature Range:** -20°C up to +200° C

**Standard:** En 13889 and meets performance requirements of US Fed. Spec. RR-C-271 Type IVA Class 3, Grade A

**Certificates:** at no extra charges this product can be supplied with a works certificate, certificate of basic raw material, manufacturer test certificate and/or EC Declaration of Conformity

G-4163



Specifications (mm)												
Working load limit	Diameter bow	Diameter pin	Diameter eye	Width eye	Width inside	Length inside	Width bow	Length	Length bolt	Width	Thickness nut	Weight each
tons	a (mm)	b (mm)	c (mm)	d (mm)	e (mm)	f (mm)	g (mm)	h (mm)	i (mm)	j (mm)	k (mm)	(kg)
12	32	35	72	32	51	115	83	201	178	147	30	10.81
13.5	35	38	80	35	57	133	92	227	197	162	33	14.42
17	38	42	88	38	60	146	99	249	202	175	19	18.06
25	45	50	103	45	74	178	126	300	249	216	23	31.34
35	50	57	111	50	83	197	138	331	269	238	26	43.77
42.5	57	65	130	57	95	222	160	377	301	274	29	62.46
55	65	70	145	65	105	260	180	433	330	310	32	87.27
85	75	83	162	73	127	329	190	527	380	340	39	136.69

Green shading reflects rental inventory.

Specifications (in.)												
Working load limit	Diameter bow	Diameter pin	Diameter eye	Width eye	Width inside	Length inside	Width bow	Length	Length bolt	Width	Thickness nut	Weight each
tons	a (in)	b (in)	c (in)	d (in)	e (in)	f (in)	g (in)	h (in)	i (in)	j (in)	k (in)	(lbs)
12	1 1/4	1 3/8	2 27/32	1 1/4	2	4 17/32	3 9/32	7 29/32	7	5 25/32	1 3/16	10.81
13.5	1 3/8	1 1/2	3 9/32	1 3/8	2 1/4	5 1/4	3 5/8	8 15/16	7 3/4	6 3/8	1 5/16	14.42
17	1 1/2	1 5/8	3 15/32	1 1/2	2 3/8	5 3/4	3 29/32	9 13/16	7 15/16	6 7/8	3/4	18.06
25	1 3/4	2	4 1/16	1 25/32	2 29/32	7	4 31/32	11 13/16	9 13/16	8 1/2	29/32	31.34
35	2	2 1/4	4 3/8	1 31/32	3 9/32	7 3/4	5 7/16	13 1/32	10 19/32	9 3/8	1 1/32	43.77
42.5	2 1/4	2 9/16	5 1/8	2 1/4	3 3/4	8 3/4	6 5/16	14 27/32	11 27/32	10 23/32	1 5/32	62.46
55	2 1/2	2 3/4	5 23/32	2 9/16	4 1/8	10 1/4	7 3/32	17 1/16	13	12 7/32	1 1/4	87.27
85	3	3 1/4	6 3/8	2 7/8	5	12 15/16	7 15/32	20 3/4	14 31/32	13 3/8	1 17/32	136.69

Green shading reflects rental inventory.

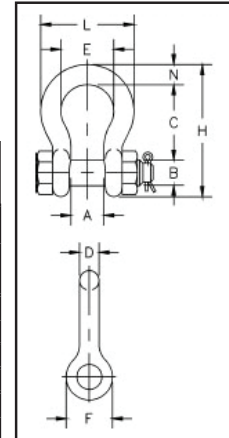
## Shackles | .33 - 150 Ton | Bolt Type

- Working Load Limit permanently shown on every shackle.
- Forged – Quenched and Tempered, with alloy pins.
- Capacities 1/3 thru 55 metric tons.
- Look for the Red Pin®...the mark of genuine Crosby quality.
- Shackles 55 metric tons and smaller can be furnished proof tested with certificates to designated standards, such as ABS, DNV, Lloyds, or other certification.
- Certification must be requested at time of order.
- Shackles 85 metric tons and larger can be provided as follows: Non Destructive Tested, Serialized Pin and Bow, Material Certification (Chemical), Certification must be requested at time of order.
- Hot Dip galvanized or Self Colored.
- Fatigue rated.

Specifications				
Nominal Shackle Size (in)	Working Load Limit* (t)	Model		2130 Weight Each (lbs)
		G-2130 Galv.	S-2130 S.C.	
1 3/4	25	1019659	1019668	33.91
2	35	1019677	1019686	52.25
2 1/2	55	1019695	1019702	98.25
3	† 85**	1019711	—	154.00
3 1/2	† 120**	1019739	—	265.00
4	† 150**	1019757	—	338.00

Green shading reflects rental inventory.

**G-2130 S-2130**



Dimensions													
Nominal Shackle Size (in)	Working Load Limit* (t)	Dimensions (in)										Tolerance + / -	
		A	B	C	D	E	F	H	L	M	N	C	A
1 3/4	25	2.88	2.04	7.00	1.84	5.00	4.19	12.34	8.80	9.68	2.25	.25	.13
2	35	3.25	2.30	7.75	2.08	5.75	4.81	13.68	10.15	10.81	2.40	.25	.13
2 1/2	55	4.13	2.80	10.50	2.71	7.25	5.69	17.90	12.75	13.58	3.13	.25	.25
3	† 85**	5.00	3.30	13.00	3.12	7.88	6.50	21.50	14.62	15.13	3.62	.25	.25
3 1/2	† 120**	5.25	3.76	14.63	3.62	9.00	8.00	24.88	17.02	17.00	4.38	.25	.25
4	† 150**	5.50	4.26	14.50	4.00	10.00	9.00	25.68	18.00	17.75	4.56	.25	.25

\*Note: Maximum Proof Load is 2.0 times the working load limit. Minimum ultimate strength is 6 times the working load limit.

\*\*Furnished in Anchor style only.

+ Individually Proof Tested with certification and furnished with round head bolts with welded handles.