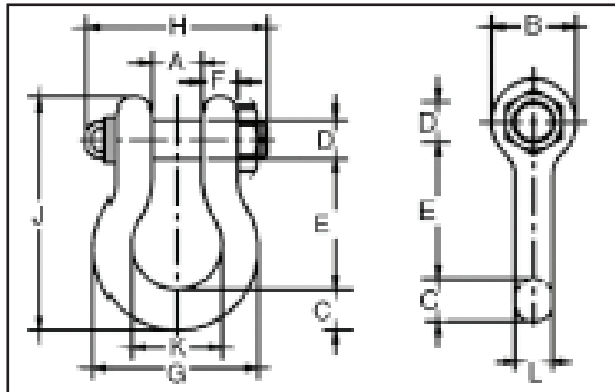


Shackles | 30 - 400 Ton | Alloy Bolt Type

- Shackles are Quenched and Tempered and can meet DNV impact requirements of 42 joules at -20°C.
- Working Load Limit is permanently shown on every shackle.
- Alloy bows, Alloy bolts.
- Quenched and Tempered.
- All sizes are individually proof tested to 2.0 times the Working Load Limit.
- Shackles 200 metric tons and larger are provided as follows.
- Non Destructive Tested.
- Serialized Pin and Bow.
- Material Certification (chemical).
- Certification must be requested at time of order.
- Forged Alloy Steel 30 thru 175 metric tons. Cast Alloy Steel 200 thru 400 metric tons.
- Pins are galvanized and painted red.

G-2140 S-2140


Specifications

Nominal Shackle Size (in.)	Working Load Limit* (t)	Model		2130 Weight Each (lbs.)
		G-2140 Galv.	S-2140 S.C.	
1 1/2	30	1021110	1021129	20.8
1 3/4	40	1021138	1021147	33.9
2	55	1021156	1021165	52.0
2 1/2	85	1021174	1021183	96.0
3	120	1021192	—	178.0
3 1/2	† 150	1021218	—	265.0
4	† 175	1021236	—	338.0
4 3/4**	† 200	1021414	—	450.0
5**	† 250	1021432	—	600.0
6**	† 300	1021450	—	775.0

Green shading reflects rental inventory.

Dimensions

Nominal Shackle Size (in.)	Working Load Limit* (t)	Dimensions (in.)											Tolerance + / -	
		A	B	C	D	E	F	G	H	J	K	L	A	E
1 1/2	30	2.38	3.62	1.62	1.63	5.75	1.39	6.88	7.75	10.00	3.88	1.54	.13	.25
1 3/4	40	2.88	4.19	2.25	2.00	7.00	1.75	8.86	9.06	12.34	5.00	1.84	.13	.25
2	55	3.25	4.81	2.40	2.25	7.75	2.00	9.97	10.41	13.68	5.75	2.08	.13	.25
2 1/2	85	4.12	5.69	3.12	2.75	10.50	2.62	12.87	13.56	17.84	7.25	2.71	.25	.25
3	120	5.00	6.50	3.62	3.25	13.00	3.00	14.36	16.50	21.50	7.88	3.11	.25	.25
3 1/2	† 150	5.25	8.00	4.12	3.75	14.63	3.75	16.50	19.00	24.62	9.00	3.62	.25	.25
4	† 175	5.50	9.00	4.56	4.25	14.50	4.00	18.42	19.75	25.69	10.00	4.10	.25	.25
4 3/4**	† 200	7.25	10.50	6.00	4.75	15.62	3.75	21.00	20.50	29.25	11.00	4.50	.25	.25
5**	† 250	8.50	12.00	6.50	5.00	20.00	3.88	24.50	21.97	35.00	13.00	4.50	.25	.25
6**	† 300	8.38	12.00	6.75	6.00	19.50	4.75	25.00	24.35	35.25	13.00	5.00	.25	.25

*Note: Maximum Proof Load is 2.0 times the working load limit. Minimum ultimate load is 4 times the working load limit on 200 thru 400 metric tons.

For sizes 30 thru 175 metric tons, minimum ultimate load is 5.4 times the working load limit.

**Cast Alloy steel.

+ Furnished with round head bolts with welded handle.

Green shading reflects rental inventory.