

Modular Spreader Beams | 14 - 110 Ton | Mod 110

NOTE: Top Slings shall be properly load-rated based on the specified angle used. LGH top sling inventory is based on Rental Center location availability.

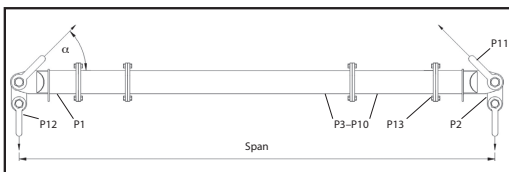
- Rated at 110t WLL at 37 ft. span. (60 degrees Base Sling Angle). See Load Table for WLL at spans greater than 37 ft.
- Base sling angle, α , 45 degrees or greater.
- End Units & Drop Links are rated at 55t (110t combined capacity).
- Bolt tightening torque: 110 pound-foot.

Table 1: Component List

Part Ref.	Description	Item Weight (lbs)
P1	End Unit (3 ft.)	379
P2	Drop Link	99
P3	20 ft. Strut	1,170
P5	10 ft. Strut	650
P6	8 ft. Strut	540
P7	6 ft. Strut	440
P8	4 ft. Strut	345
P9	2 ft. Strut	230
P10	1 ft. Strut	185
P11	85t Shackle	137
P12	55t Shackle	87
P13	M20x65 HT Bolts, Nuts & Washers	

Green shading reflects rental inventory.
 • Beam weights calculated without top rigging.

- Max number of struts allowed in spreader assembly: 6
- Assemble longer struts in the center of the spreader configuration
- Sling angle is crucial to safe use of spreader. Do not rig the lower slings more than 6 degrees from vertical.

Typical Spreader Assembly

Table 2: Load v. Span

Span (ft)	Base to Sling Angle (BSA) α						Recommended Configuration EU – End Unit (3 ft.)				Beam Weight (lbs)
	45°		60°		70°						
	WLL metric tons (tonnes)	Min. top sling length (ft in)	WLL metric tons (tonnes)	Min. top sling length (ft in)	WLL metric tons (tonnes)	Min. top sling length (ft in)					
6	110	3'1"	110	4'10"	110	7'7"	EU	EU	—	—	1,404
7	110	3'10"	110	5'10"	110	9'1"	EU	1 EU	—	—	1,589
8	110	4'6"	110	6'10"	110	10'6"	EU	2 EU	—	—	1,636
9	110	5'2"	110	7'10"	110	12'0"	EU	2 1 EU	—	—	1,821
10	110	5'11"	110	8'10"	110	13'6"	EU	4 EU	—	—	1,757
11	110	6'7"	110	9'10"	110	14'11"	EU	4 1 EU	—	—	1,942
12	110	7'4"	110	10'10"	110	16'5"	EU	6 EU	—	—	1,846
13	110	8'0"	110	11'10"	110	17'10"	EU	6 1 EU	—	—	2,031
14	110	8'8"	110	12'10"	110	19'4"	EU	8 EU	—	—	1,946
15	110	9'5"	110	13'10"	110	20'10"	EU	8 1 EU	—	—	2,131
16	110	10'1"	110	14'10"	110	22'2"	EU	10 EU	—	—	2,046
17	110	10'11"	110	15'10"	110	23'8"	EU	10 1 EU	—	—	2,231
18	110	11'7"	110	16'10"	110	25'1"	EU	10 2 EU	—	—	2,286
19	110	12'4"	110	17'10"	110	26'7"	EU	2 10 1 EU	—	—	2,471
20	110	13'0"	110	18'10"	110	28'1"	EU	10 4 EU	—	—	2,401
21	110	13'8"	110	19'10"	110	29'6"	EU	4 10 1 EU	—	—	2,586
22	110	14'5"	110	20'10"	110	31'0"	EU	10 6 EU	—	—	2,496
23	110	15'1"	110	21'10"	110	32'6"	EU	6 10 1 EU	—	—	2,681
24	110	15'10"	110	22'10"	110	33'11"	EU	10 8 EU	—	—	2,596
25	110	16'6"	110	23'10"	110	35'5"	EU	8 10 1 EU	—	—	2,781
26	110	17'2"	110	24'10"	110	36'10"	EU	20 EU	—	—	2,576
27	110	17'11"	110	25'10"	110	38'4"	EU	20 1 EU	—	—	2,761
28	110	18'7"	110	26'10"	110	39'10"	EU	20 2 EU	—	—	2,806
29	108	19'4"	110	27'10"	110	41'2"	EU	2 20 1 EU	—	—	2,991
30	103	20'0"	110	28'10"	110	42'8"	EU	20 4 EU	—	—	2,921
31	96	20'10"	110	29'10"	110	44'2"	EU	4 20 1 EU	—	—	3,106
32		21'6"	110	30'10"	110	45'7"	EU	20 6 EU	—	—	3,016
33	84	22'2"	110	31'10"	110	47'1"	EU	6 20 1 EU	—	—	3,201
34		22'11"	110	32'10"	110	48'6"	EU	20 8 EU	—	—	3,116
35	74	23'7"	110	33'10"	110	50'0"	EU	8 20 1 EU	—	—	3,301
36	70	24'4"	110	34'10"	110	51'6"	EU	20 10 EU	—	—	3,226
37	65	25'0"	110	35'10"	110	52'11"	EU	10 20 1 EU	—	—	3,411
38	60	25'8"	106	36'10"	110	54'5"	EU	2 20 10 EU	—	—	3,456
39	56	26'5"	98	37'10"	110	55'10"	EU	2 20 10 1 EU	—	—	3,641
40	52	27'1"	92	38'10"	110	57'4"	EU	4 20 10 EU	—	—	3,571
41	48	27'10"	85	39'10"	110	58'10"	EU	4 20 10 1 EU	—	—	3,756
42	46	28'6"	81	40'10"	110	60'2"	EU	6 20 10 EU	—	—	3,666
43	43	29'2"	75	41'10"	110	61'8"	EU	6 20 10 1 EU	—	—	3,851
44	40	29'11"	70	42'10"	110	63'2"	EU	8 20 10 EU	—	—	3,766
45	37	30'8"	65	43'10"	105	64'7"	EU	8 20 10 1 EU	—	—	3,951
46	35	31'5"	62	44'10"	99	65'10"	EU	20 EU	—	—	3,746
47	32	32'1"	57	45'10"	92	67'6"	EU	20 20 1 EU	—	—	3,931
48	30	32'10"	54	46'10"	87	69'0"	EU	20 20 2 EU	—	—	3,976
49	28	33'6"	50	47'10"	81	70'6"	EU	2 20 20 1 EU	—	—	4,161
50	26	34'2"	47	48'10"	76	71'11"	EU	20 20 4 EU	—	—	4,091
51	24	34'11"	44	49'10"	71	73'5"	EU	4 20 20 1 EU	—	—	4,276
52	23	35'7"	41	50'10"	67	74'11"	EU	20 20 6 EU	—	—	4,186
53	21	36'4"	38	51'10"	62	76'4"	EU	6 20 20 1 EU	—	—	4,371
54	20	37'0"	37	52'10"	59	77'10"	EU	20 20 8 EU	—	—	4,286
55	19	37'8"	34	53'10"	55	79'2"	EU	8 20 20 1 EU	—	—	4,471
56		38'5"	32	54'10"	52	80'8"	EU	20 20 10 EU	—	—	4,396
57	16	39'1"	30	55'10"	48	82'2"	EU	10 20 20 1 EU	—	—	4,581
58		39'7"	28	56'7"	46	83'5"	EU	10 20 20 2 EU	—	—	4,626
59	14	40'7"	26	57'10"	42	85'1"	EU	2 10 20 20 1 EU	—	—	4,811

Green shading reflects rental inventory.
 • Beam weights calculated without top rigging.