

Modular Spreader Beams | 104 - 600 Ton | Mod 1000/600

Table 2: Load v. Span

Span (ft)	Base to Sling Angle (BSA) α						Recommended Configuration						Beam Weight (lbs)			
	45°		60°		70°		EU – End Unit (3 ft.), CA – Cone Adaptor (2 ft.)									
	WLL metric tons (tonnes)	Min. top sling length (ft in)	WLL metric tons (tonnes)	Min. top sling length (ft in)	WLL metric tons (tonnes)	Min. top sling length (ft in)	To calculate the WLL at intermediate spans utilising the 1ft strut, round up the span to the next longest span in Table 2, and use the stated WLL.									
10	444	5'0"	600	7'11"	600	12'6"	EU	CA	CA	EU	—		9,292			
15	444	9'5"	600	12'11"	600	19'9"	EU	CA	5	CA	EU	—		11,364		
20	444	12'0"	600	17'11"	600	27'1"	EU	CA	10	CA	EU	—		12,257		
25	444	15'6"	600	22'11"	600	34'5"	EU	CA	10	5	CA	EU	—		14,229	
30	444	19'1"	600	27'11"	600	41'10"	EU	CA	20	CA	EU	—		14,052		
35	444	22'7"	600	32'11"	600	49'0"	EU	CA	20	5	CA	EU	—		16,124	
40	444	26'2"	600	37'11"	600	56'5"	EU	CA	20	10	CA	EU	—		17,017	
45	444	29'8"	600	42'11"	600	63'7"	EU	CA	30	5	CA	EU	—		17,922	
50	444	33'4"	600	47'11"	600	71'0"	EU	CA	10	30	CA	EU	—		18,815	
55	444	36'9"	600	52'11"	600	78'3"	EU	CA	10	30	5	CA	EU	—		20,887
60	419	40'4"	600	57'11"	600	85'7"	EU	CA	20	30	CA	EU	—		20,610	
65	364	43'10"	600	62'11"	600	92'10"	EU	CA	20	30	5	CA	EU	—		22,682
70	316	47'5"	555	67'11"	600	100'2"	EU	CA	20	30	10	CA	EU	—		23,575
75	272	50'10"	478	72'11"	600	107'6"	EU	CA	30	30	5	CA	EU	—		24,480
80	231	54'5"	409	77'11"	600	114'9"	EU	CA	30	30	10	CA	EU	—		25,973
85	190	57'11"	338	82'11"	543	122'2"	EU	CA	30	30	10	5	CA	EU	27,445	
90	163	61'6"	290	87'11"	468	129'5"	EU	CA	20	30	30	CA	EU	—		27,168
95	130	65'0"	235	92'11"	380	136'8"	EU	CA	20	30	30	5	CA	EU	29,240	
100	104	68'7"	190	97'11"	309	144'1"	EU	CA	20	30	30	10	CA	EU	30,133	

NOTE: Top Slings shall be properly load-rated based on the specified angle used. LGH top sling inventory is based on Rental Center location availability.

- Rated at 600t WLL at 65 ft. span (60 degrees Base Sling Angle).
- End Units & Drop Links are rated at 300t (600t combined lift).
- Base sling angle, α, 45 degrees or greater.

Table 1: Component List

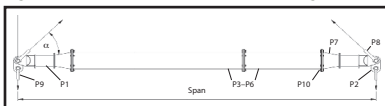
Part Ref.	Description	Weight / Item (lbs)
P1	End Unit (MOD 400)	1,500
P2	Drop Link (MOD 400)	397
P3	30 ft. Strut	6558
P4	20 ft. Strut	4760
P5	10 ft. Strut	2965
P6	5 ft. Strut	2072
P7	MOD 1000 Cone Adaptor	1190
P9	400t Wide Body Shackle	1279
P10	300t Wide Body Shackle	794
P10	M24 Bolts, Nuts & Washers	

Green shading reflects rental inventory.
 •Beam weights calculated without top rigging.

- Max number of struts allowed in spreader assembly: 5
- Assemble longer struts in the center of the spreader configuration
- Sling angle is crucial to use of spreader. Do not rig the lower slings more than 6 degrees from vertical.
- Bolt tightening torque: 184 Pound-Foot. Spanner size required: 36mm.
- Recommended additional equipment: Torque Wrench, Podger Spanner and Ring Spanner.

Green shading reflects rental inventory.
 •Beam weights calculated without top rigging and may vary depending on strut configuration.
 * Spans available in 1 foot increments

Typical Spreader Assembly



P8 represents Modular 400 struts used to create beam spans increased in 1 foot increments.
 Mod 400 struts can be inserted between the Mod 1000 Cone Adaptors and the Mod 400 End Unites. However, the following restrictions apply:
 *At least 50% of the spreader must be Mod 1000 struts.
 *A maximum of 3 Mod 400 struts can be assembled per side.