

Modular Spreader Beams | 104 - 700 Ton | Mod 1000/700

NOTE: Top Slings shall be properly load-rated based on the specified angle used. LGH top sling inventory is based on Rental Center location availability.

- Rated at 700t WLL at 60 ft. span (60 degrees Base Slinge Angle).
- End Units & Drop Links are rated at 350t (700t combined lift).
- Base sling angle, α , 45 degrees or greater.

Table 1: Component List

Part Ref.	Description	Weight / Item (lbs)
P1	End Unit (MOD 400)	1,500
P2	Drop Link (MOD 400)	397
P3	30 ft. Strut	6,558
P4	20 ft. Strut	4,760
P5	10 ft. Strut	2,965
P6	5 ft. Strut	2,072
P7	MOD 1000 Cone Adaptor	1,190
P8	400t Wide Body Shackle	1,279
P9	400t Wide Body Shackle or 400t Heavy Duty Shackle	1,279/1,234
P10	M24 x 90, Grade 8.8, HT Bolts, Nuts & Washers	

Green shading reflects rental inventory.
 •Beam weights calculated without top rigging.

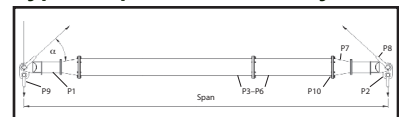
- Max number of struts allowed in spreader assembly: 5
- Assemble longer struts in the center of the spreader configuration
- Sling angle is crucial to use of spreader. Do not rig the lower slings more than 6 degrees from vertical.
- Bolt tightening torque: 184 Pound-Foot. Spanner size required: 36mm.
- Recommended additional equipment: Torque Wrench, Podger Spanner and Ring Spanner.

Table 2: Load v. Span

Span (ft)	Base to Sling Angle (BSA) α						Recommended Configuration										Beam Weight (lbs)
	45°		60°		70°		EU – End Unit (3 ft.), CA – Cone Adaptor (2 ft.)										
	WLL metric tons (tonnes)	Min. top sling length (ft in)	WLL metric tons (tonnes)	Min. top sling length (ft in)	WLL metric tons (tonnes)	Min. top sling length (ft in)	To calculate the WLL at intermediate spans utilising the 1ft strut, round up the span to the next longest span in Table 2, and use the stated WLL.										
10	444	5'0"	700	8'9"	700	12'6"	EU	CA	CA	EU	—				9,956		
15	444	9'5"	700	14'2"	700	19'9"	EU	CA	5	CA	EU	—				12,028	
20	444	12'0"	700	19'7"	700	27'1"	EU	CA	10	CA	EU	—				12,921	
25	444	15'6"	700	25'1"	700	34'5"	EU	CA	10	5	CA	EU	—		14,993		
30	444	19'1"	700	30'6"	700	41'10"	EU	CA	20	CA	EU	—				14,716	
35	444	22'7"	700	35'11"	700	49'0"	EU	CA	20	5	CA	EU	—		16,788		
40	444	26'2"	700	41'4"	700	56'5"	EU	CA	20	10	CA	EU	—		17,681		
45	444	29'8"	700	46'9"	700	63'7"	EU	CA	30	5	CA	EU	—		18,586		
50	444	33'4"	700	52'3"	700	71'0"	EU	CA	10	30	CA	EU	—		19,479		
55	444	36'9"	700	57'8"	700	78'3"	EU	CA	10	30	5	CA	EU	—		21,551	
60	419	40'4"	700	63'1"	700	85'7"	EU	CA	20	30	CA	EU	—		21,274		
65	364	43'10"	637	65'11"	700	92'10"	EU	CA	20	30	5	CA	EU	—		23,346	
70	316	47'5"	555	67'11"	700	100'2"	EU	CA	20	30	10	CA	EU	—		24,239	
75	272	50'10"	478	72'11"	700	107'6"	EU	CA	30	30	5	CA	EU	—		25,144	
80	231	54'5"	409	77'11"	654	114'9"	EU	CA	30	30	10	CA	EU	—		26,037	
85	190	57'11"	338	82'11"	543	122'2"	EU	CA	30	30	10	5	CA	EU	—		28,109
90	163	61'6"	290	87'11"	468	129'5"	EU	CA	20	30	30	CA	EU	—		27,832	
95	130	65'0"	235	92'11"	380	136'8"	EU	CA	20	30	30	5	CA	EU	—		29,904
100	104	68'7"	190	97'11"	309	144'1"	EU	CA	20	30	30	10	CA	EU	—		30,797

Green shading reflects rental inventory.
 •Beam weights calculated without top rigging and may vary depending on strut configuration.
 * Spans available in 1 foot increments

Typical Spreader Assembly



P8 represents Modular 400 struts used to create beam spans increased in 1 foot increments.
 Mod 400 struts can be inserted between the Mod 1000 Cone Adaptors and the Mod 400 End Unites. However, the following restrictions apply:
 *At least 50% of the spreader must be Mod 1000 struts.
 *A maximum of 3 Mod 400 struts can be assembled per side.