

Shackles | 3.3 – 150 Ton | Alloy Bolt Type

Material: bow and pin alloy steel, grade 8, quenched and tempered

Finish: hot dipped galvanized (175 ton shackle is painted)

Safety Factor: MBL equals 5 x WLL

Temperature Range: -20°C up to +200°C

Standard: ASME B30.26 and meets performance requirements of US Fed. Spec. RR-C-271

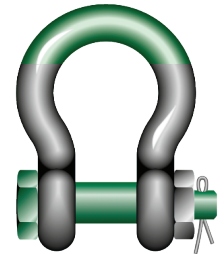
Certification: 21, 22, 31, MTC^a, MTC^b, LROS, CE, ABS PDA, ABS MA

Type IVA Class 3, grade B

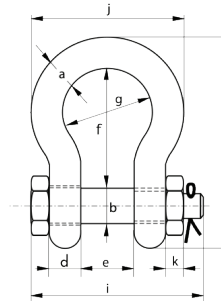
Specifications (mm)												
Working load limit	Diameter bow	Diameter pin	Diameter eye	Width eye	Width inside	Length inside	Width bow	Length	Length bolt	Width	Thickness nut	Weight each
tons	a (mm)	b (mm)	c (mm)	d (mm)	e (mm)	f (mm)	g (mm)	h (mm)	i (mm)	j (mm)	k (mm)	(kg)
18	32	35	72	32	51	115	83	201	178	147	30	4.95
21	35	38	80	35	57	133	92	227	197	162	33	6.62
30	38	42	88	38	60	146	99	249	217	175	34	8.11
40	45	50	103	45	74	178	126	300	260	216	40	15
55	57	57	117	57	83	197	138	341	303	252	46	23
85	70	70	143	70	105	260	180	437	363	320	56	44
150**	95	95	208	95	147	400	238	647	524	428	50	112

* For shackles ≥ WLL 150t
** With round headed bolt

** Excluded from ABS Type Approval
Green shading reflects rental inventory.



G-5263



Specifications (mm)												
Working load limit	Diameter bow	Diameter pin	Diameter eye	Width eye	Width inside	Length inside	Width bow	Length	Length bolt	Width	Thickness nut	Weight each
tons	a (in)	b (in)	c (in)	d (in)	e (in)	f (in)	g (in)	h (in)	i (in)	j (in)	k (in)	(lbs)
18	1 1/4	1 3/8	2 37/32	1 1/4	2	4 17/32	3 3/32	7 29/32	7	5 25/32	1 3/16	10.91
21	1 3/8	1 1/2	3 5/32	1 3/8	2 1/4	5 1/4	3 5/8	8 15/16	7 3/4	6 3/8	1 5/16	14.59
30	1 1/2	1 5/8	3 15/32	1 1/2	2 3/8	5 3/4	3 29/32	9 13/16	8 17/32	6 7/8	1 5/16	17.88
40	1 3/4	2	4 1/16	1 25/32	2 29/32	7	4 31/32	11 13/16	10 1/4	8 1/2	1 9/16	33.07
55	2	2 1/4	4 19/32	2 1/4	3 3/32	7 3/4	5 1/16	13 7/16	11 15/16	9 29/32	1 25/32	50.71
85	2 1/2	2 3/4	5 5/8	2 3/4	4 1/8	10 1/4	7 3/32	17 1/32	14 3/32	12 19/32	2 7/32	97
150**	3 3/4	3 3/4	8 3/16	3 3/4	5 25/32	15 3/4	9 3/8	25 15/32	20 7/8	16 27/32	1 31/32	352.74

* For shackles ≥ WLL 150t
** With round headed bolt

** Excluded from ABS Type Approval
Green shading reflects rental inventory.