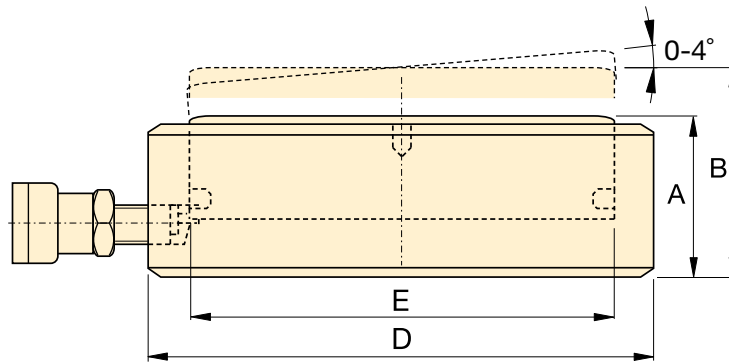


# Hydraulic Cylinders | 200 Ton | CUSP Series | Single Acting - Load Return - Ultra-Flat

CUSP-200



Specifications											
Cylinder Cap. Tons (Max)	Tilted Stroke (in)	Straight Stroke (in)	Model Number	Tilting +/- (degrees)	Cylinder Effective Area (in <sup>2</sup> )	Oil Capacity (in <sup>3</sup> )	A Collapsed Height (in)	B Extended Height (in)	D Outside Diameter (in)	E Cylinder Bore Diameter (in)	Weight (lbs)
200 (235.0)	0.39	0.59	CUSP200	3	46.28	27.15	2.72	3.30	9.02	7.68	47.4

*Green Shading reflects rental inventory.*